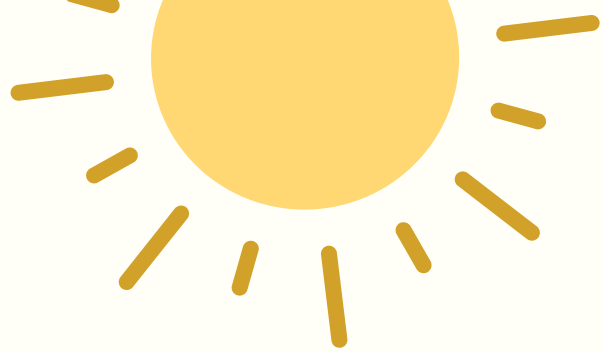


AM I ELIGIBLE FOR SPRING & SUMMER



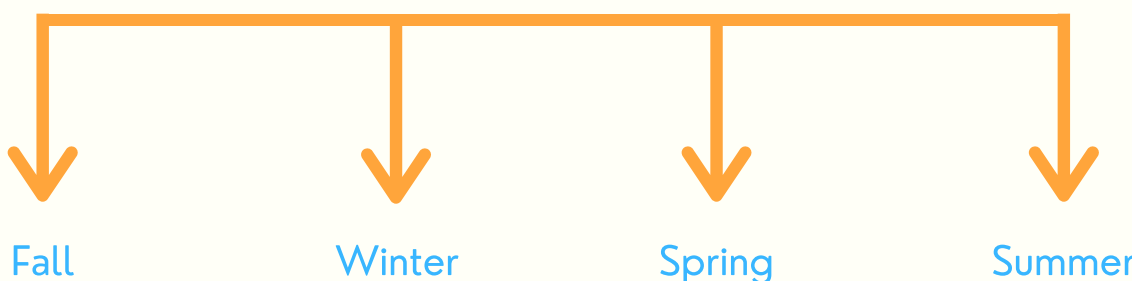
VACATION?

Did you come to BYU on a new SEVIS number and receive an initial I-20?

No

Yes

What is/was your first semester to physically be at BYU on the initial I-20?



Fall

Yes, as long as you take Fall & Winter semester as a full-time student.

Winter

Yes. Please submit a Vacation Request, & be sure to take the next Fall & Winter semesters full-time.

Spring

You are eligible to take Summer term off after completing Spring. Please submit a Vacation Request & be sure to take Fall & Winter full-time.

Summer

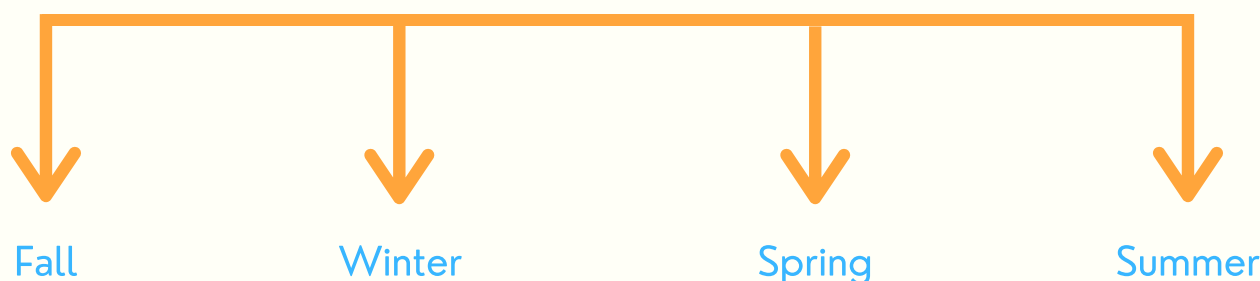
No. You must take Summer, Fall, & Winter full-time before taking a Spr/Sum vacation.

No

Did you transfer to BYU with the same SEVIS record?

Yes

What was your first semester after transferring?



Fall

Yes, as long as you take Fall & Winter semester as a full-time student at BYU.

Winter

If you were a full-time student during Fall at your previous school & do full-time Winter at BYU, you are eligible for Spr/Sum vacation.

Spring

If you took Fall & Winter full-time at your previous school & do Spring term full-time at BYU, you are eligible to take Summer term off. Please submit a Vacation Request. If you only took Winter semester full-time at your previous school, you must take Spr/Sum terms full-time at BYU.

Summer

No. You must take Summer, Fall, & Winter full-time before taking a Spr/Sum vacation.

Talk to the ISSS office.

If you have ANY doubts or questions, please talk to the ISSS office first!